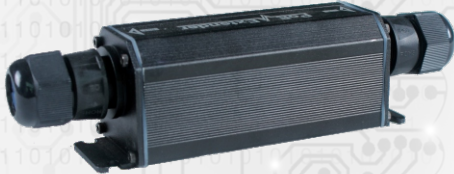


Quick Start Guide



Outdoor Gigabit PoE+ Extender

1 Features

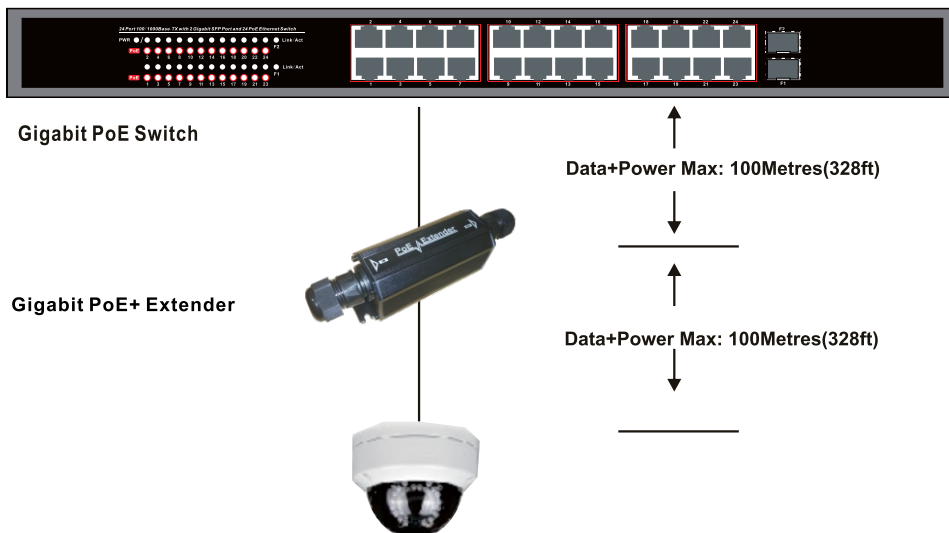
- Compatible with IEEE802.3af and IEEE802.3at.
- Extends the range of PoE and Gigabit Ethernet an additional 100 meters.
- No additional power supply is required.
- Automatically detects and protects PoE equipments from being damaged by incorrect installation.
- Gigabit Full-rate network throughout the whole extended distance.
- Wall-Mountable design.
- Easy plug-and-play installation.
- IP67(Support outdoor rain prevention, need outdoor waterproof UTP cable)



Notice: The transmission distance is related to the connected cable. Standard Cat5e/6 network cable and the quality of camera will help maximize the furthest distance possible.

2 Product Introduction

The Outdoor Gigabit PoE+ Extender is encased in a durable aluminum housing that is IP67 certified, making it resistant to extreme temperatures ranging from -30°C to 55°C. By connecting two of these extenders in series, the range of Power over Ethernet devices like surveillance cameras or wireless access points can be extended up to 300 meters. This setup eliminates the need for a separate power adapter, as the extender draws power directly from a PoE injector or switch via a single CAT5/6 UTP cable. The actual extension distance can vary depending on the power requirements of the connected device and the available PoE power per port.



3 Specifications

Item	Description
No. of channels	1(PoE IN) into 1(PoE OUT)
Pass Through Data Rates	10/100/1000 Mbps half/full duplex
Power over Ethernet input	Pin Assignment and Polarity: Both 1/2, 3/6 and 4/5,7/8
Power over Ethernet Output	Pin Assignment and Polarity: 1/2 (+), 3/6 (-) Output Power: up to 25W
Connectors	Shielded RJ-45, EIA 568A and 568B
Network cables	Outdoor type Shielded category 5 (or higher)
Mounting	Wall of shelf
Environment	Indoor or Outdoor
Regulatory Compliance	IEEE 802.3af (PoE), IEEE 802.3at (PoE+)
Environmental Conditions	Operating Ambient Temperature:-30 to 55°C Operating Humidity: Maximum 90%, Non-condensing Storage Temperature:-40 to 70°C Storage Humidity: Maximum 95%, Non-condensing
Dimensions	185mm x 45mm x 45mm

Specification change will not be noticed

4 Maximum Distances for Power Sources

Multiple PoE Extenders can be connected every 100 meters to obtain greater distances. The actual figures depend on operating conditions. The range is over 24AWG or heavier Cat-5e or Cat-6 cable except where specified.

Examples for medium power PoE Devices (that are PoE Class 2, or require under 6 watts).

PoE Source			
PoE switch (802.3af, Output voltages 50V)	15W mid-span (802.3af, Output voltages 50V)	PoE+ switch (802.3at, Output voltages 50V)	30W mid-span (802.3at, Output voltages 50V)
Maximum Distances			
300m	300m	400m	400m

Examples for full power PoE Devices (that are PoE Class 0 or 3, or require under 12 watts).

PoE Source			
PoE switch (802.3af, Output voltages 50V)	15W mid-span (802.3af, Output voltages 50V)	PoE+ switch (802.3at, Output voltages 50V)	30W mid-span (802.3at, Output voltages 50V)
Maximum Distances			
200m	200m	300m	300m

Examples for PoE+ Devices (that are PoE Class 4 that under 22 watts, or 802.3at compliant).

PoE Source			
PoE switch (802.3af, Output voltages 50V)	15W mid-span (802.3af, Output voltages 50V)	PoE+ switch (802.3at, Output voltages 50V)	30W mid-span (802.3at, Output voltages 50V)
Maximum Distances			
Not applicable	Not applicable	200m	200m